



BETTER
together

2020-2021 Annual Report

BETTER *together*

The COVID-19 pandemic brought unimaginable challenges to the world that echoed beyond 2020.

Collaboration and partnership soared as city and county governments, public school districts, and nonprofit organizations leaned in to uplift citizens of Western Tidewater and Gates County, North Carolina.

To honor their tenacity, Obici Healthcare Foundation released the COVID-19 Response Fund on June 11, 2020. Grant funding supported procurement of personal protective equipment, cleaning and sanitation supplies, virtual platform access, temporary staff, small business relief, utility assistance, and other COVID-19 related needs. These invaluable grant partners leveraged grant funding to provide essential services that aided in access to critical resources.

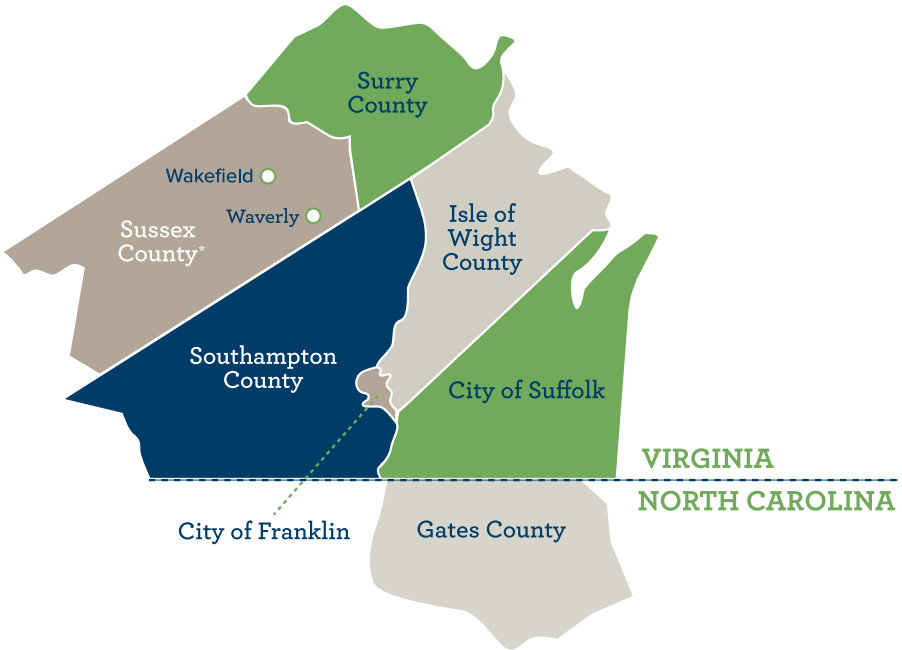
Obici Healthcare Foundation extends its gratitude to its grant partners. Thank you for showcasing strength and resiliency — Together.



Pictured: (Left - Right) Harvey Whitney, Joyce Whitney, Mary Herndon, Pastor Steven Blunt, and Gayle Jackson from First Baptist Church Mahan donated necessities to Marleisa Montgomery from The Genieve Shelter and Mary Sue Rawls from Coalition Against Poverty in Suffolk.

(Photo courtesy of Rachel Austin/Suffolk News-Herald)

SERVICE *area*



**The Foundation supports the Towns of Waverly and Wakefield in Sussex County.*

MUNICIPAL *populations*

Obici Healthcare Foundation is proud to serve a region where more than 190,000 people live.

Sussex County	2,707
<i>one fourth of Sussex County's population of 10,828</i>	
Surry County.....	17,996
Southampton County.....	18,570
Isle of Wight County	38,606
City of Franklin.....	8,180
City of Suffolk.....	94,324
Gates County, NC	12,197

FY 2020-2021

Financial Summary

REVENUE AND EXPENSES

FISCAL YEAR APRIL 1, 2020 – MARCH 31, 2021

REVENUE

Investment Income, Net	\$ 44,300,644
Grant Revenue	\$ 31,828
Other Gain (Loss)	\$ 247

Total Revenue and Gains \$ 44,332,719

EXPENSES

Grants (Awards, Net)	\$ 2,761,597
Program and Administrative	\$ 1,413,351
Provision for Unrelated Business Income and Excise Taxes	\$ 570,227

Total Expenses \$ 4,745,175

Change in Net Assets \$ 39,587,544

Net Assets, Beginning of Year \$ 99,872,185

Net Assets, End of Year \$ 139,459,729

These summarized statements do not include all disclosures or the format required by generally accepted accounting principles. Complete audited financial statements, including footnote disclosures, are available on our website (www.obicihcf.org).



Pictured: Cheryl Rowlands with Isle of Wight Christian Outreach Program distributes nutritional foods and literacy materials at a community event.

(Photo Courtesy of Isle of Wight Christian Outreach Program)

FY 2020-2021

Awarded COVID-19 Response Fund grants

COUNTIES AND CITIES – ECONOMIC DEVELOPMENT AND SMALL BUSINESS SUPPORT

City of Suffolk Department of Economic Development	\$200,000.00
County of Gates, North Carolina	\$20,000.00
Franklin Southampton Economic Development, Inc.	\$135,000.00
Isle of Wight County Economic Development Department	\$135,000.00
Surry County Department of Economic Development.....	\$45,000.00

COUNTIES AND CITIES – COVID-19 SAFETY SUPPLIES AND CITIZEN RELIEF SUPPORT

City of Franklin Department of Social Services	\$35,000.00
City of Suffolk Department of Social Services.....	\$100,000.00
Isle of Wight County Department of Social Services	\$10,000.00
Surry County Department of Social Services.....	\$10,000.00
Sussex County Office of Public Safety	\$6,275.40

NONPROFIT ORGANIZATIONS – COVID-19 SAFETY SUPPLIES AND CREATIVE SOLUTIONS

Bon Secours Mercy Health Foundation	\$98,400.00
Boys and Girls Clubs of Southeast Virginia.....	\$14,235.00
City of Franklin Department of Parks and Recreation	\$10,350.00
City of Suffolk – Suffolk Public Library.....	\$31,250.00
Cover 3 Foundation	\$25,000.00
ForKids.....	\$77,020.00
Girls on the Run of South Hampton Roads	\$7,200.00
Isle of Wight Christian Outreach Program.....	\$37,832.00
Nursing CAP, Inc.....	\$17,200.00
Paul D. Camp Community College Foundation	\$40,070.00
Senior Services of Southeastern Virginia	\$15,000.00
Smart Beginnings Western Tidewater	\$7,000.00
STOP Inc.....	\$35,000.00
Suffolk Center for Cultural Arts.....	\$19,647.00
Suffolk Christian Fellowship Center	\$13,468.80
Suffolk Humane Society	\$2,500.00
Surry County Department of Social Services.....	\$2,000.00
The Children’s Center	\$49,851.00

The Genieve Shelter	\$53,660.00
The Planning Council.....	\$19,443.00
Virginia Legal Aid Society, Inc	\$50,000.00
Walk In It, Inc.....	\$8,000.00
Western Tidewater Community Services Board.....	\$25,000.00
Western Tidewater Health District.....	\$91,273.84
YMCA of the Virginia Peninsulas	\$8,200.00

PUBLIC SCHOOL DISTRICTS – COVID-19 SAFETY SUPPLIES AND CREATIVE SOLUTIONS

Franklin City Public Schools	\$16,000.00
Gates County Public Schools	\$53,530.00
Isle of Wight County Schools.....	\$39,000.00
Southampton County Public Schools	\$50,000.00
Suffolk Public Schools	\$50,000.00
Surry County Public Schools.....	\$83,353.02

TOTAL AWARD OF \$1,746,759.06



PRIORITY *grants*

FY 2020-2021

Obici Healthcare Foundation awarded
12 Priority grants in the amount of

\$923,696.17

This number does not include COVID-19 Response Fund grants, Community Engagement grants, or any returned grant funds.

Access to Care Grants

STRENGTHENING THE SAFETY NET

EVMS Endocrine Care at Western Tidewater Free Clinic	\$8,517.00
The Genieve Shelter Supporting Survivors of Violence.....	\$50,000.00

Prevention Grants

EARLY CHILDHOOD EDUCATION PARTNER GRANTS

Franklin City Public Schools	\$14,069.25
Isle of Wight County Schools.....	\$15,798.00
Southampton County Public Schools	\$14,793.92
Suffolk Public Schools	\$44,432.00
Surry County Public Schools.....	\$12,536.00
The Children's Center	\$13,550.00
University of Virginia	\$350,000.00

HEALTHY BEHAVIORS – IMPLEMENTATION PROJECT GRANT

Surry County – Surry County Marketplace.....	\$300,000.00
--	--------------

(multi-year grant commitment)

HEALTHY SPACES

City of Suffolk Department of Parks and Recreation.....	\$50,000.00
<i>Coulbourn Park Improvements</i>	
Franklin City Public Schools	\$50,000.00
<i>Extended Learning Outdoor Classrooms</i>	

*Pictured: Pre-kindergarteners at Meherrin Elementary School participate in morning routine.
(Photo courtesy of Southampton Public Schools)*

MISSION *statement*

OUR MISSION

The mission of Obici Healthcare Foundation is to improve the health status of the people living in the service area by responding to the medical needs of the indigent and uninsured and by supporting programs which have the primary purpose of preventing illness and disease.

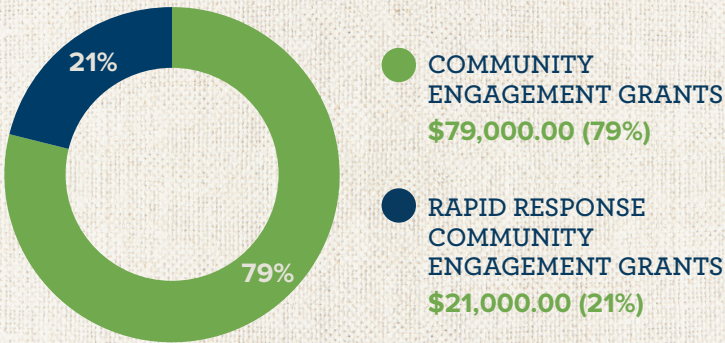
Our Vision

The vision of Obici Healthcare Foundation is good health and wellness for all.

Over the past year, Obici Healthcare Foundation has awarded \$100,000 in Community Engagement grants.

Community Engagement grants are awarded to improve the health status of the community. The maximum funding available is \$5,000 and granted once in a 12-month period.

With local organizations continuing to combat complex challenges, Obici Healthcare Foundation supported COVID-19 relief and recovery efforts with Rapid Response Community Engagement Grants.



OBICI
HEALTHCARE
FOUNDATION