

TRANSFORMING
HEALTHCARE

From One Decade to the Next

OBICI HEALTHCARE
FOUNDATION

2017 ANNUAL REPORT

BOARD MEMBERS



Robert C. Barclay IV



Robert C. Claud



R. Scott Carr



Pat Edwards, ALNP



Jeffrey D. Forman, MD



Ralph L. Howell, Jr., DDS



Pastor Emanuel Myrick



Lynne H. Rabil



Frank A. Spady III



Janice F. White



Thomas L. Woodward III

TRANSFORMING
HEALTHCARE

LETTER

from the CEO and Chair

In our 2017 annual report, we reflect on the history of the Obici Healthcare Foundation and highlight three of our key partners, each of whom have allowed us to improve healthcare for the under and uninsured of Western Tidewater and Gates County, North Carolina.

Over the past 11 years, the Foundation has proudly granted over \$42 million dollars to over 180 organizations who have worked diligently towards *transforming* healthcare in the Foundation's service area. We are pleased to highlight three of our earliest grantee partners and their contributions to our community:

- The relationship between **Sentara Obici Hospital** and the Foundation began over 11 years ago with Mr. Obici's generosity in founding the hospital. Today, part of the Sentara Healthcare organization, Sentara Obici Hospital remains an essential partner and key advocate for local healthcare.
- The **Western Tidewater Free Clinic** was conceptualized in 2004 with the Suffolk Partnership for a Healthy Community. The mission of the Free Clinic and that of the Foundation have remained united: to provide top quality healthcare for uninsured individuals.
- The Suffolk Partnership for a Healthy Community, now known as **Healthy Suffolk**, partnered with the Foundation on a major project to address healthy eating and active living. Initially working together in a programmatic manner, our relationship has evolved to the joint pursuit of wellness policy, best practices and advocating for innovative approaches in the community.

As we review the strengths of our past, we excitedly and confidently look towards a healthier future for our community. As always, we pause to admire the immense legacy of one man's generosity and the immeasurable influences it has made in his community.

The Obici Healthcare Foundation remains committed to advancing the legacy of this great man.

Sincerely,



A handwritten signature in black ink that reads "R. Scott Carr".

R. Scott Carr
Chairman, Board of Directors



A handwritten signature in black ink that reads "Annette C. Beuchler".

Annette C. Beuchler, MBA FACHE
President and CEO

SUFFOLK'S GREATEST PHILANTHROPIST AND THE HISTORY OF THE OBICI HEALTHCARE FOUNDATION

1800s

Amedeo Obici

The seeds of the Obici Healthcare Foundation were planted in the mid-1940s when Amedeo Obici, an Italian immigrant who founded the successful Planters Peanuts Company, built a hospital in Suffolk as a lasting legacy to his wife. The Louise Obici Memorial Hospital would provide Suffolk's citizens with local, quality healthcare, and today his generosity lives on through the work of the Obici Healthcare Foundation.



Amedeo Obici
at 11-years old

Amedeo Obici's rags-to-riches story began in northern Italy in 1877, when Luisa and Pietro Obici, a saddle maker, had their firstborn. When young Amedeo was 7, his dad died, leaving Luisa with little means to care for her four children. She eventually made the difficult decision to send Amedeo to America to live with her brother in Pennsylvania. Amedeo, who was only 11 at the time and could speak no English, boarded an Italian steamer alone and headed to his new life in the United States.

He acclimated quickly, thanks to an impeccable work ethic and keen business sense. Amedeo wasted no time finding a job, working all day to help support his family back home and attending grammar school at night to learn English

Amedeo was a hard worker and a quick study, observing the likes and dislikes of shoppers at the outdoor fruit stand where he worked. He noticed people often walked by while eating peanuts, and he observed that peanuts had a longer shelf life than produce. With this knowledge, he successfully convinced his boss to sell peanuts at the stand. Amedeo then built a roaster that produced peanuts customers really liked; and soon, roasted peanuts were outselling the fruit. Once sales leveled off, Amedeo built a peanut roaster on wheels that brought peanuts to the people.

By age 18, Amedeo had saved enough money to bring his mother, brother and two sisters to America. When Amedeo saved another \$100, he went into business for himself, buying a sidewalk fruit stand in Wilkes-Barre where he sold hot roasted peanuts in the shell. When he sold the fruit stand, he bought a restaurant and eventually bought the three-story building where his restaurant operated.

Suffolk's Planters Nut and Chocolate



1900s

In 1906, Amedeo Obici and Mario Peruzzi, his future brother-in-law and business partner, closed the restaurant and devoted the entire three levels of the building into a factory to produce peanut-roasting machines. Business was good, but Instead of taking the profits, Mr. Obici used them to expand his business. A genius at marketing, Mr. Obici increased sales with a contest (the letters O-B-I-C-I were placed into individuals bags of peanuts) that gave customers a chance to win an Ingersoll watch. Peanut sales zoomed, and the company bought peanuts by the carloads to keep up. Soon, Mr. Obici and Peruzzi founded Planters Peanut Company.

Mr. Obici aboard his yacht, the Alura, which he loaned to the navy at the outbreak of World War II



School children take a tour of Planters Peanuts accompanied by "Mr. Peanut"



At that time, peanuts were sold and consumed outdoors, but Mr. Obici recognized an indoor market was unmet. He hired someone to make machines that could shell and clean peanuts. Soon stores, saloons, mining camps and other establishments in cities and towns across the region were buying the small transparent bags of 2-ounces of Virginia peanuts for a nickel. In 1910, Planters Peanut Company grossed \$100,000; and again Mr. Obici returned the profits to the company.



Mr. and Mrs. Obici



When he was 39, Amedeo Obici moved to Suffolk to be closer to Virginia peanut planters. To further expand his business, he successfully persuaded a bank board to grant him a \$100,000 loan. That same year, 1915, Mr. Obici married Louise Musante, an Italian immigrant who had befriended him when he first came to America. He and his new wife moved to Suffolk full-time and purchased Bay Point Farm, a 260-acre estate on the Nansemond River, where they remained until her death in 1938.

When Planters Peanuts was fully moved to Suffolk, it sprawled over 120 acres in the heart of the city. Mr. Obici increased the workweek to five days and paid equal salaries to all employees regardless of race or nationality. In another genius marketing move, Mr. Obici held a contest to choose a company trademark that would stand the test of time.

He smiled when he saw the stick figure drawing of a peanut that was submitted by a teenage boy. "Mr. Peanut" remains the symbol of Planters Peanuts to this day. In 1942, Planters hit an all-time sales high of \$20 million. That same year, Mr. Obici endowed the Louisa Obici Memorial Hospital as a lasting legacy to his wife.



Mr. Peanut

The Louise Obici Memorial Hospital

Mr. Obici died in 1947, nine years after losing his wife. Days later, the Suffolk News Herald ran a story that exemplified Mr. Obici's generosity: "Local People Main Beneficiaries of A. Obici Estate." With the hospital endowed and chartered, construction began in 1949 and the Louise Obici Hospital and the Louise Obici School of Nursing were dedicated on September 16, 1951. The hospital had 117 adult beds and 28 bassinets, and in keeping with Mr. Obici's wishes, no patient unable to pay for needed care was turned away. This ensured that local residents received a quality of care comparable to that available in far larger cities at substantially lower costs.

In addition to the hospital, Mr. Obici funded a foundation that would ensure that the Louise Obici Hospital could meet the growing and changing needs of the community over the years. With these funds, the hospital was renovated, equipment modernized and community outreach projects funded.

The hospital board was forward thinking as they noted the need to stay current with technology, watch the growing government intervention into healthcare and the spiraling inflation. As the original hospital building was nearing 50 years old, the board decided it should be replaced. A substantial portion of Foundation funds was used to construct a new, modern hospital.

●
*top, Sentara Obici
Hospital, bottom,
Louise Obici Hospital*



2000s

The Obici Healthcare Foundation

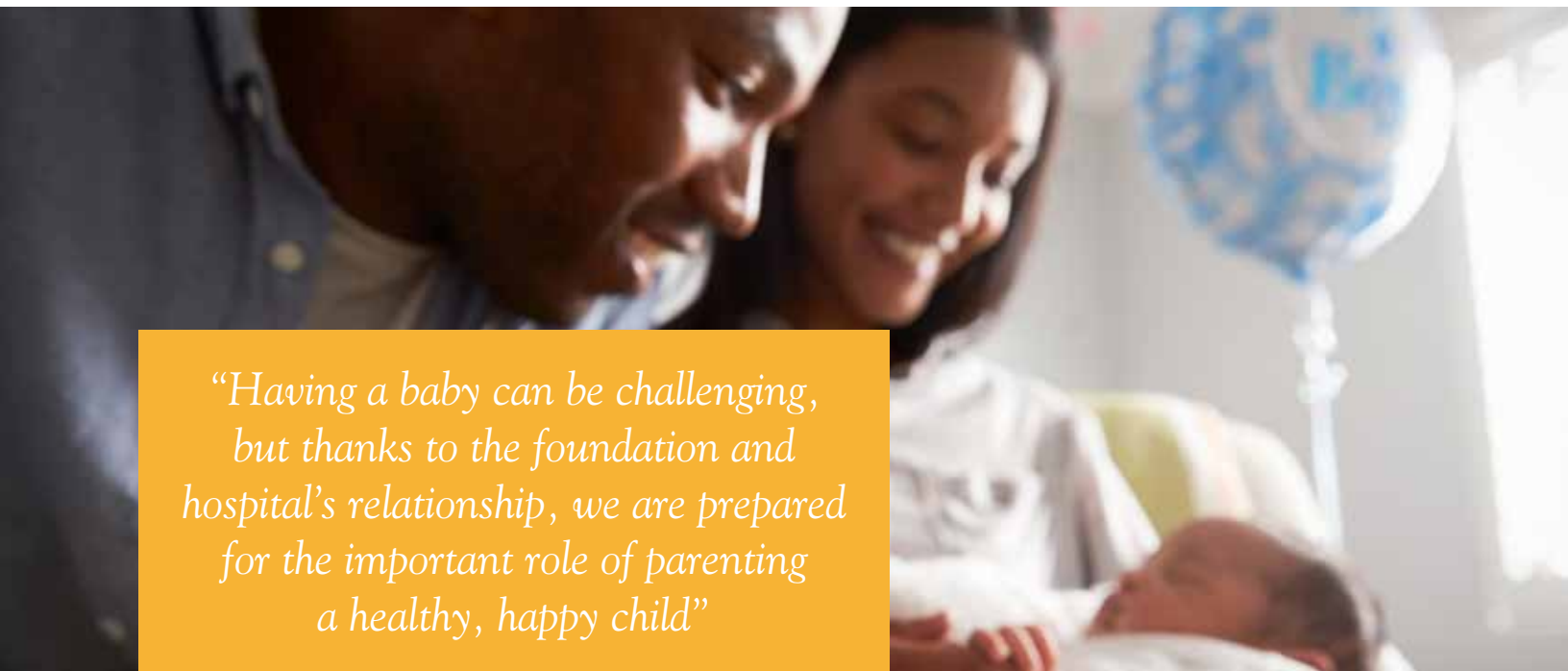
In 2002, a new Louise Obici Memorial Hospital opened on Godwin Boulevard. Four years later, in a move to preserve the Obici funds that subsidized the cost of healthcare to patients, the Louise Obici Memorial Hospital merged into the Sentara Health System. The assets from the hospital sale and the remainder of Mr. Obici's foundation merged to fund the Obici Healthcare Foundation, a Foundation independent of any other organization. The Obici Healthcare Foundation, with assets of approximately \$100 million, continues Mr. Obici's wishes and delivers, by way of grant funding, his vision to improve the health of the community and to provide for the people of Western Tidewater.

Early Partners

The Obici Healthcare Foundation board began grant funding in March of 2007. Included among the 30 organizations which received funding were Sentara Obici Hospital, the Western Tidewater Free Clinic and Suffolk Partnership for a Healthy Community. Over the past 10 years of funding, these three partners' programs have continued to meet the Foundation's mission.



Foundation Office



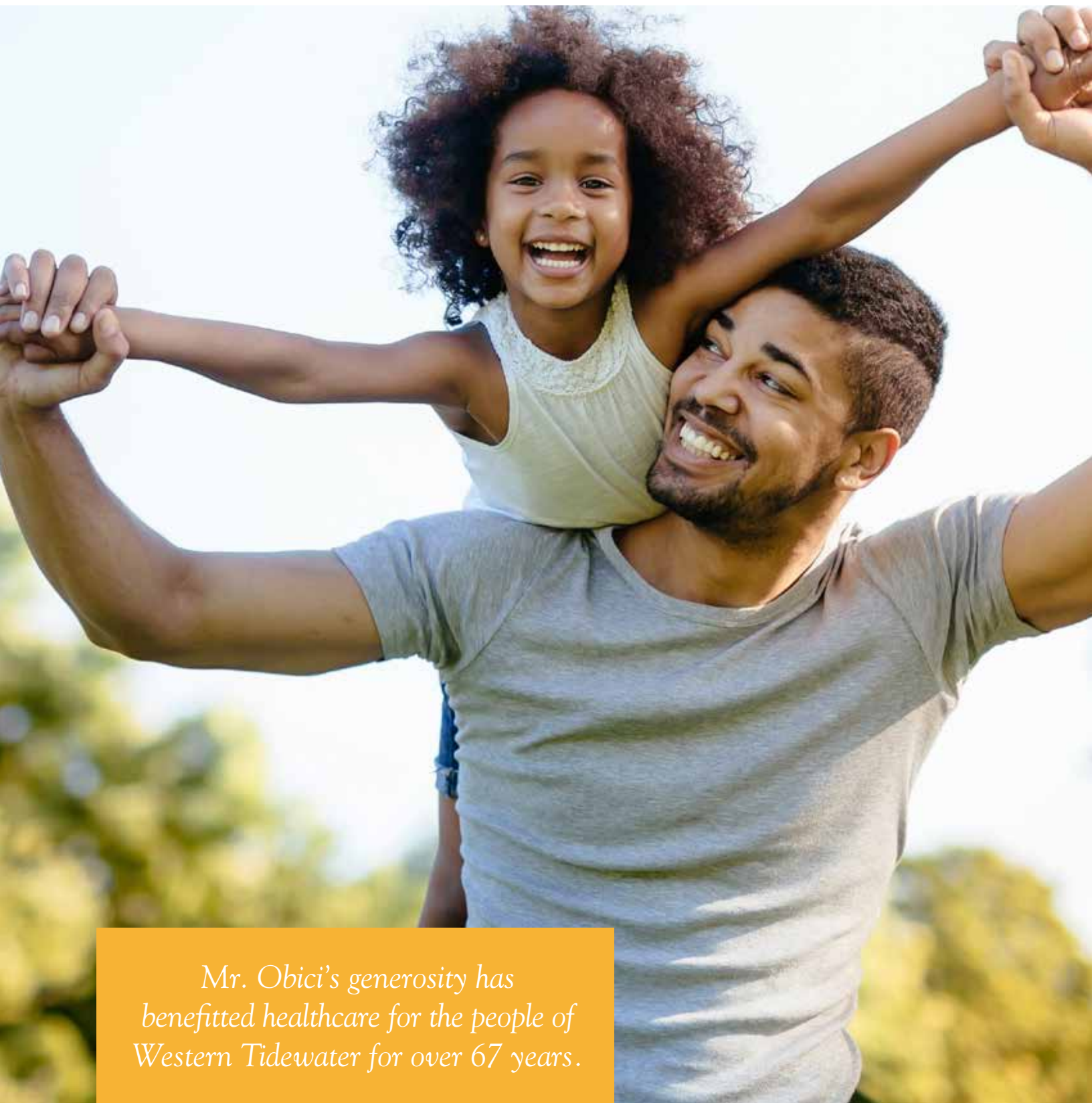
“Having a baby can be challenging, but thanks to the foundation and hospital’s relationship, we are prepared for the important role of parenting a healthy, happy child”

Sentara Obici Hospital

Sentara Obici Hospital is about saving lives, making the community healthy and fulfilling the promise of Mr. Obici. The benefits Sentara Obici Hospital received from the merger were immediate and substantial. The legacy impact has continued and is evident in everyday relationships.

Together, with the Obici Healthcare Foundation, Sentara Obici Hospital uses its resources to serve the underserved and at-risk families, raise the healthcare standards in the community and push forward with creative programs to serve community needs and serve as a connector.

The hospital’s programs, including **Healthy Families**, have grown through the years. When Healthy Families began, the hospital was only able to fund one part-time registered nurse who was responsible for screening and assessing all qualifying first-time postnatal mothers delivering at the hospital. With a Foundation grant, a full-time Universal Screening Coordinator and two part-time Maternity Nurse Navigators were hired. Following three years of Foundation funding, the program has sustained and has been integrated into a budgeted program fully funded by the hospital. The grants have enabled the hospital to determine the level of community support new mothers need for their personal wellness and their child’s development. Generations will be impacted thanks to this partnership.



Mr. Obici's generosity has benefitted healthcare for the people of Western Tidewater for over 67 years.

All expectant mothers scheduled for delivery at Sentara Obici Hospital are assigned a Maternity Nurse Navigator, a specially trained nurse who is available to answer questions and assist new mothers throughout their pregnancy, labor and delivery. Nurse Navigators help reduce an expectant mother's stress and anxiety, listen to the expectant mother's needs, help her and her family understand the plan of care and educate them on community resources available during pregnancy and after delivery. Sometimes knowing what questions to ask helps the family to make needed changes to welcome a baby into their home. Navigators also host free teen childbirth classes monthly.

Another identified great need in the community is the **Life Coach Program**, which provides patients with chronic conditions the tools and resources they need to maintain daily life. Patients are identified through referrals or watch boards at the hospital.

The Community Health Outreach Program (CHOP) nurse attends a patient



The first grant funding to the hospital from the Obici Healthcare Foundation was for the **Community Health Outreach Program (CHOP)**, which continues to provide in-home services for patients with chronic diseases. Today, CHOP is sustained by the hospital and consists of four nurses and one educator who go into a patient's home to provide health management services. Patients learn how to take medication, how to read medication directions, how to make healthy food choices and are even accompanied grocery shopping. The hospital can help pay for medication, help to teach the community how to avoid fast food and how to understand their disease.

Through another partnership, the hospital is utilizing grant funding to reach out to another underserved population. The **Prenatal Collaboration** brings together Sentara Obici Hospital and the Children's Center to provide case management and support to expecting families living in Western Tidewater that are identified as at-risk through the universal screening process. This population does not qualify for other home-visiting services.

Sentara Obici Hospital truly lives up to Mr. Obici wishes and the hospital believes that he would truly be proud of their work.

The Western Tidewater Free Clinic

The concept of a free clinic to provide top-quality healthcare for uninsured individuals was conceptualized at a meeting of the Suffolk Partnership for a Healthy Community almost simultaneously with the formation of the Obici Healthcare Foundation. The Foundation and other community funders provided funding for the clinic, which opened its doors at its first location on June 21, 2007, on Godwin Boulevard. Almost immediately, the demand far outweighed the room; the clinic quickly outgrew its space.

The clinic purchased, renovated and furnished a much larger facility on Meade Parkway in 2009. Today, Sentara Obici Hospital, the Obici Healthcare Foundation and the Western Tidewater Free Clinic form a critical tripod in Western Tidewater to serve those individuals who would otherwise fall through the healthcare gap.

Western Tidewater Free Clinic's mission is to provide high-quality, non-emergency health care to the residents of Western Tidewater who cannot otherwise afford it. Services include primary care, dental health, women's health, mental health, access to legal aid assistance, and access to various community resources. In addition, the clinic implements a pharmacy program for residents who cannot afford medications. At least 90 percent of clinic patients have multiple chronic illnesses, many of which cannot be medically managed without medications. The onsite pharmacy exists as a direct result of the Foundation's commitment to this critical piece of comprehensive, coordinated health home model of care.



The Western Tidewater Free Clinic on Meade Drive in Suffolk

Before the founding of the free clinic, thousands of residents of Western Tidewater had no access to basic healthcare and were using hospital emergency departments for medical treatment, often coming in with life-threatening issues from years without primary care. The Western Tidewater Health District is a Medically Underserved Area as designated by the U.S. Health Resources and Services Administration and is at risk for healthcare access problems. The free clinic has

offered a solution to its patients who fall into this gap of healthcare access. As a direct result, diabetic patients have seen improvements in A1C blood sugar levels, hypertensive patients have seen significant improvement in their blood pressure, obese patients have seen improvements in their body mass index (BMI), and dental patients who have gone



“Our partnership with OHF and all of the incredible resources provided by that partnership has allowed WTFC to become a comprehensive coordinated health care system, a true health home and it has afforded us to the opportunity to become brokers of hope.”

~ Pamela Witt, Director of Clinical Services

years without dental care now have access to dental services. The free clinic also offers a denture program that can lead to better overall health and well being for residents.

To this day, the Obici Healthcare Foundation has been the largest annual funder of the Western Tidewater Free Clinic.

Use of boxed quote for Western Tidewater Free Clinic: Pamela Witt, Director of Clinical Services: “Our partnership with OHF and all of the incredible resources provided by that partnership has allowed WTFC to become a comprehensive coordinated health care system, a true health home and it has afforded us to the opportunity to become brokers of hope.”



“The generous support of the Obici Healthcare Foundation has been essential to Healthy Suffolk carrying out its mission of advocacy, wellness and livability in Suffolk.”

Doug Naismith, Chairman, Healthy Suffolk

Suffolk Partnership for a Healthy Community

In 2010, The Obici Healthcare Foundation made a commitment to support a collective impact initiative to reduce obesity in the City of Suffolk. The vision was to create a citywide endeavor to improve the health of everyone who lives, works, plays, or prays in Suffolk.

To implement and manage this initiative, the Foundation funded the Suffolk Partnership for a Healthy Community (SPHC), a nonprofit collaborative best known for having established the Western Tidewater Free Clinic. Founded in 1998, SPHC was engaged in sponsoring several healthy eating and active living programs and had experience mobilizing the community’s assets around a vision to create a healthy community. In its new role, SPHC committed to putting in place the operational infrastructure required for obesity prevention, including an effective communications and marketing plan, a fund development plan, the necessary committees and workgroups, and bringing together and partnering with private enterprise and local government agencies to ensure the long-term success of the initiative.

Recognizing the immediate and long-term health threat posed to Suffolk's population from the obesity epidemic, the Foundation and SPHC brought key players and stakeholders from across Suffolk together to develop a plan of action. Together they engaged in a two-year process to create a citywide, comprehensive, coordinated, measurable, and long-term obesity prevention plan. The multi-year plan that emerged was called **Healthy People, Healthy Suffolk**. Its primary aim was to reverse the trend of obesity and obesity-related chronic diseases to achieve a healthy, vibrant Suffolk within a decade.

SPHC, together with several members of the Foundation Board, shaped many of the objectives and actions defined in the plan given their links to community leaders and on-the-ground experience with local programs. In 2013 Healthy People-Healthy Suffolk adopted its 10-year plan that combined the best practice models and the conclusions of evidence-based research conducted nationally. It included the insights and input of government, civic, business, and faith leaders based on their knowledge of what works in Suffolk. The plan had four goals: to promote healthy eating habits and cultivate and increase access to healthy foods in Suffolk; to create a walkable and physically active community; to engage and empower residents to develop healthy Suffolk neighborhoods and lifestyles; and to increase awareness and build community and financial support for active and healthy living in Suffolk.

In 2016, SPHC began doing business as "Healthy Suffolk," dropped the goal of obesity prevention, and adopted the more positive mission of wellness and livability. To date the Foundation has provided approximately 50 percent of Healthy Suffolk's funding. The Obici Healthcare Foundation remains committed to its mission which includes supporting programs that lead to the prevention of illness and disease.

The next 10 years

Could Amedeo Obici have really gathered how much he could transform healthcare in Western Tidewater by honoring a wife he loved with a community hospital? Although that question cannot be answered, his generosity and wish that the bulk of his estate benefit healthcare for the people of Western Tidewater has done just that. As the Foundation moves forward from its first 10 years of funding, so begins the next decade *for responding to the medical needs of the indigent and uninsured and by supporting programs which have the primary purpose of preventing illness and disease.*

2016-2017 financial summary

OBICI HEALTHCARE FOUNDATION, INC.

| | |
|--|-----------------------|
| FINANCIAL POSITION – FISCAL YEAR ENDED MARCH 31, 2017 | |
| ASSETS | |
| Cash and Investments | \$ 113,916,827 |
| Property and Equipment, Net | 1,676,789 |
| Other Assets | <u>889,307</u> |
| Total Assets | \$ <u>116,482,923</u> |
| LIABILITIES AND NET ASSETS | |
| Healthcare Grants Payable | \$ 2,826,122 |
| Accounts Payable and Accrued Expenses | 40,947 |
| Bond Payable | 1,364,024 |
| Deferred Federal Excise Taxes | <u>588,272</u> |
| Total Liabilities | 4,819,365 |
| Unrestricted Net Assets | <u>111,663,558</u> |
| Total Liabilities and Net Assets | \$ <u>116,482,923</u> |
| REVENUE AND EXPENSES – FISCAL YEAR ENDED MARCH 31, 2017 | |
| REVENUE | |
| Investment Income, Net | \$ 15,866,343 |
| Other Income (Loss) | <u>(412)</u> |
| Total Revenue and Gains | <u>15,865,931</u> |
| EXPENSES | |
| Healthcare Grants (Awards, Net) | 5,852,233 |
| Program and Administrative | 1,172,558 |
| Provision for Unrelated Business Income and Excise Taxes | <u>325,706</u> |
| Total Expenses | <u>7,350,497</u> |
| Change in Net Assets | 8,515,434 |
| Net Assets, Beginning of Year | <u>103,148,124</u> |
| Net Assets, End of Year | \$ <u>116,482,923</u> |

These summarized statements do not include all disclosures or the format required by generally accepted accounting principals. Complete audited financial statements, including footnote disclosures, are available on our website (www.obicihcf.org).

GRANT AWARDS BY PRIORITY AND GRANT TYPE

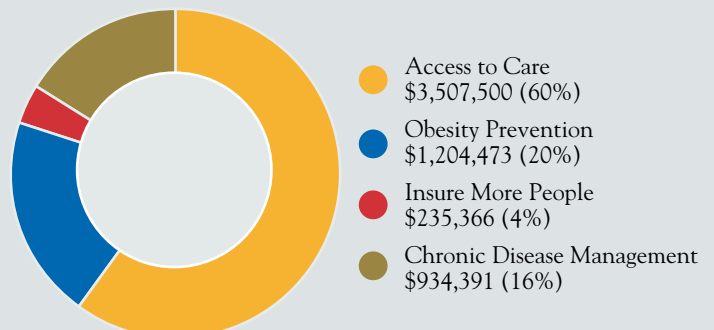
Fiscal Year 2016 – 2017

A total of 76 grants were awarded to 44 organizations for 2016-2017 in the amount of \$5,881,730.75.

During this period:

- > \$3,507,500 (60%) supported Access to Care
- > \$1,204,473 (20%) supported Obesity Prevention
- > \$235,366 (4%) for Insure More People
- > \$934,391 (16%) for Chronic Disease Management

\$94,803 for Community Engagement Grants



investment review

The Foundation's investment portfolio receives the close attention of the Investment Committee and Obici's investment advisor CornerStone Partners, based in Charlottesville, Virginia.

The primary long-term objective of the Foundation's investment program is to manage the assets in a prudent and well-diversified manner to ensure sufficient resources to meet funding requirements while preserving principal and maximizing returns and to match or outperform the established portfolio benchmark, given appropriate risk constraints.

The portfolio is broadly diversified across asset classes, strategies, geographies and investment managers with established performance. The Board sets overall investment policy and long-term asset allocation ranges and targets. Actual asset allocation as of March 31, 2017, is depicted in the circle graph.

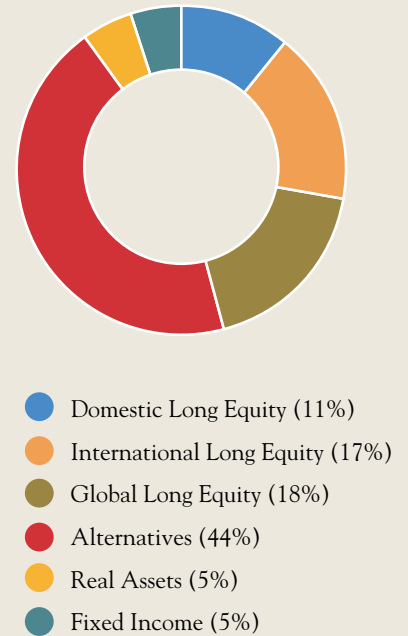
For the fiscal year ended March 31, 2017, the portfolio appreciated by +15.5% net of all fees and expenses. This compares to an increase of +9.8% for the portfolio's total benchmark and +15.0% for the global equity markets. From inception in October 2006 through March 2017, the Foundation's portfolio has compounded at +6.3% per year net of all fees and expenses compared to +2.9% for the portfolio benchmark and +4.9% for the global equity markets.

Our goal is to grow the investment portfolio so that we can increase our contributions to the community.

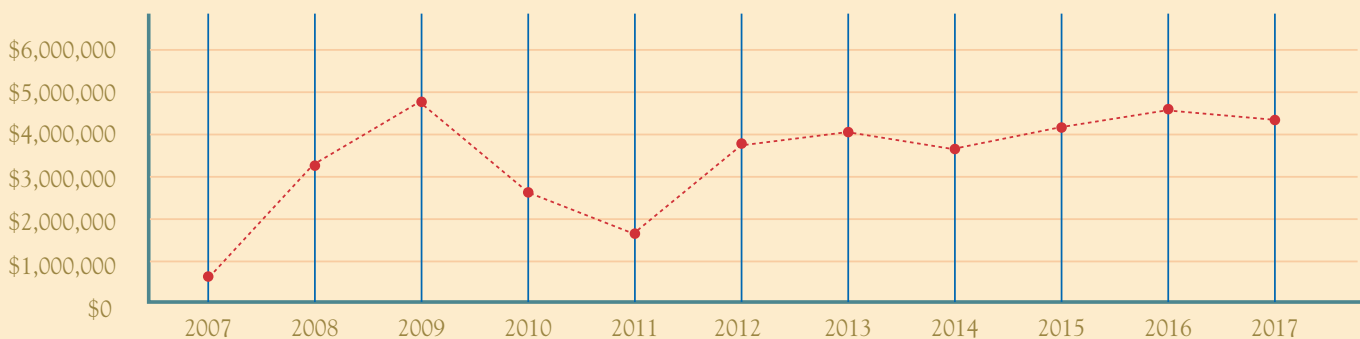
2016 ASSET ALLOCATION

As of March 31, 2017

At the end of March 2017, the investment portfolio totaled approximately \$113 million and the Foundation had awarded over \$42 million in grants.

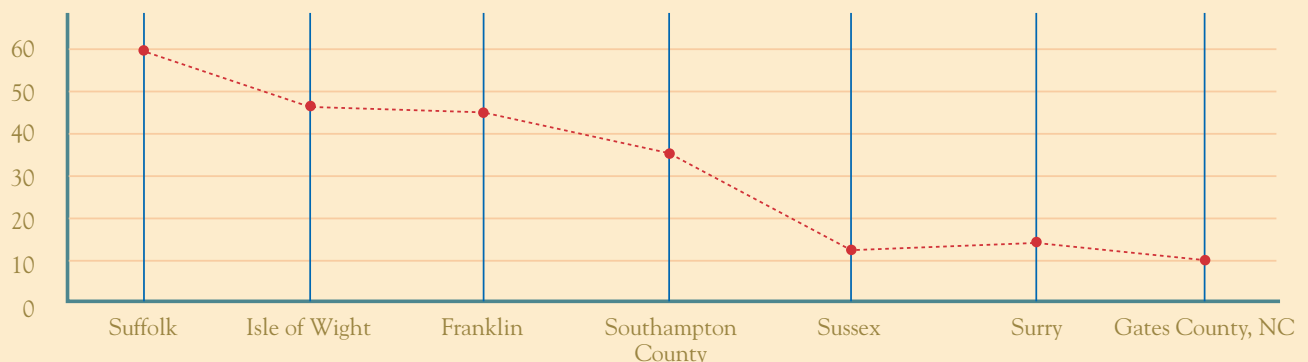


TOTAL AMOUNT PAID PER YEAR Since Inception to March 31, 2017



TOTAL GRANTS SERVING GEOGRAPHICAL AREA FY 2016-2017

(Some grants serve more than one area.)



FY 2017 AWARDED GRANTS

IMPROVE ACCESS

| | | | | | |
|---|--------------|---|---|--------------|---|
| Albemarle Regional Health | \$125,000.00 | To reduce morbidity, mortality and costs among pre-diabetics and diabetics residing in Gates County. | Sentara Obici Hospital | \$226,702.00 | To provide high risk expectant families and new parents with case management and home visiting support to increase infant survival rate. |
| American Diabetes Association | \$35,305.00 | To train ambassadors in the high health-risk communities in Franklin and Southampton County, to raise awareness of diabetes and to stress the importance of early detection and disease management. | Sentara Obici Hospital | \$65,229.00 | To provide critically chronic ill patients access to a stable medical home and to foster patient engagement via Chronic Disease Management using a case management model. |
| Catholic Charities of Eastern Virginia | \$223,071.00 | Dental vouchers will be available for financially eligible residents of Western Tidewater to receive acute dental care at participating dental clinics, Virginia health centers and private practices. | Southeastern Virginia Health System | \$400,000.00 | To provide access to comprehensive oral healthcare services for Western Tidewater residents. |
| Eastern Virginia Medical School | \$500,000.00 | To fund a Specialty Care Center that focuses on the detection, prevention and management of diabetes and its most common complications. | Suffolk Family YMCA | \$30,000.00 | To provide pool lifts that allow persons with physical limitations to participate in various water aerobics activities at Camp Arrowhead and the Suffolk Family YMCA. |
| Eastern Virginia Medical School | \$90,000.00 | To provide access to basic healthcare to uninsured, Western Tidewater Free Clinic patients by engaging medical residents, third-year medical and physician assistant students. | Suffolk Meals on Wheels | \$24,085.00 | To purchase a replacement delivery vehicle for the distribution and delivery of meals. |
| ForKids, Inc. | \$45,000.00 | To improve the health of poor and homeless families in Western Tidewater through intensive case management and referrals to community resources. | Suffolk Meals on Wheels | \$109,609.50 | To provide short-term emergency meals to at-risk patients transitioning home from the hospital with one or more health issues. |
| ForKids, Inc. | \$25,000.00 | To plan and design a new trauma-informed facility that will serve Suffolk and Western Tidewater. | Suffolk Redevelopment and Housing Authority | \$25,000.00 | To raise awareness among residents of public housing communities in Suffolk about the health hazards from secondhand smoke in public places and reduce the number of smokers. |
| Franklin City Department of Social Services | \$32,070.00 | To increase the number of children and families enrolled and renewed in Medicaid and FAMIS. | The Genieve Shelter | \$65,000.00 | To provide capital support in the replacement of two vehicles. |
| Franklin City Public Schools | \$62,500.00 | To provide students and families of Franklin City Public Schools with access to behavioral health services. | The King's Daughters | \$10,000.00 | To fund a pediatric neonatal-intensive medical transport unit equipped with state-of-the-art technology. |
| Horizon Health Services, Inc. | \$100,000.00 | To provide dental care and smoking cessation services in the Franklin, Southampton, Isle of Wight, Surry and Sussex service areas. | The Planning Council of Western Tidewater | \$25,000.00 | To fund a planning grant to assess and understand the oral healthcare needs of children ages 0-5 years in early childcare programs. |
| HumanKind | \$29,145.00 | To provide residents and staff with wellness education, management of chronic disease and the benefits of physical activity. | The Up Center | \$158,884.00 | To continue providing individuals and families with trauma-informed care and counseling services in Western Tidewater. |
| Isle of Wight County Department of Social Services | \$65,796.00 | For a proactive outreach program to increase the number of children and families enrolled in Medicaid and FAMIS in Isle of Wight County. | Tidewater Community College Academy for Nonprofit Excellence | \$15,562.00 | To provide capacity building subject matter intended for senior level staff of local nonprofit agencies. |
| RAM of Virginia | \$30,000.00 | To support the Southside Remote Area Medical (RAM) clinic with providing free primary medical care, mental health services, dental services, vision services, prescription assistance, and nutrition and health education to the community. | United Way of South Hampton Roads – United for Children | \$136,378.00 | To support a learning and enrichment six-week summer school for low academic level Suffolk elementary children that includes healthy meals, physical fitness, access to basic hearing, vision and oral health care, behavioral health assessment and intervention, and staff development on trauma-informed care of students. |
| Senior Services of Southeastern Virginia | \$37,500.00 | To provide seniors and persons with disabilities with outreach services to apply for eligible benefits through Medicare and Medicaid. | Virginia Legal Aid Society | \$100,000.00 | To help disabled clients navigate the complex Medicaid and Medicare application and appeals processes. |

| | |
|---|-----------------------|
| Voices for Kids CASA Program of Southeast Virginia | \$25,000.00 |
| To expand advocacy services for children involved in Suffolk juvenile courts due to neglect and abuse. | |
| VOLUNTEER Hampton Roads | \$39,375.00 |
| To fund a program to increase the effectiveness and efficiencies in the volunteer operations of three nonprofit organizations for the benefit of the community they serve. | |
| Western Tidewater Community Services Board | \$61,885.00 |
| To train peer providers who will educate, monitor and assist enrolled peers with chronic disease management. | |
| Western Tidewater Community Services Board | \$626,254.25 |
| To provide uninsured and under insured adults with access to community-based psychiatric services for behavioral health care. | |
| Western Tidewater Community Services Board | \$75,000.00 |
| To establish a program that will assess and assist individuals with behavioral health diagnosis to prevent incarceration, receive treatment and case management in a place-based setting. | |
| Western Tidewater Community Services Board | \$92,827.00 |
| To train peer providers who will educate, monitor and assist enrolled peers with chronic disease management. | |
| Western Tidewater Community Services Board | \$109,236.00 |
| To provide on-site integrated outpatient counseling by trained clinical staff at local shelters, community health centers and clinics. | |
| Western Tidewater Community Services Board | \$75,000.00 |
| To continue Western Tidewater's first outpatient medical detoxification program that provides daily testing, counseling, support and referral services to substance abusers. | |
| Western Tidewater Free Clinic | \$500,000.00 |
| To provide operational support for medical and dental care and chronic disease management of uninsured patients. | |
| Western Tidewater Health District Inc. | \$280,844.00 |
| To implement a national model – Nurse Family – to improve prenatal health, child health and development through age two in Franklin, Suffolk and Isle of Wight County. | |
| Total Improve Access | \$4,677,257.75 |

PREVENTION

| | |
|---|-------------|
| City of Suffolk | \$75,000.00 |
| To construct a mile-long trail located in North Suffolk for walkers and bikers. | |
| City of Suffolk | \$75,000.00 |
| To build a paved, quarter-mile walking trail at Lake Kennedy Park. | |
| Cover 3 Foundation | \$50,000.00 |
| To support a refrigerated vehicle and updated kitchen equipment for food safety meal preparation and delivery to feed children in after-school and summer USDA programs. | |
| Eastern Virginia Medical School | \$41,269.00 |
| To develop collaborative strategies that create policy, systems and environmental changes that result in healthy food choices and physical activity through churches, public housing and community organizations. | |
| Foodbank of Southeastern Virginia | \$25,000.00 |
| To fund the development of a five-year strategic plan that will promote diet-related good health to Western Tidewater's low-income population that may transition clients to self-sustainability. | |
| Girl Scout Council of the Colonial Coast | \$15,000.00 |
| To support capital improvements to Camp Darden's ropes course and new outdoor climbing wall for cardio and strength training for Girl Scouts and adults from Western Tidewater. | |

| | |
|--|-----------------------|
| Girls on the Run South Hampton Roads | \$37,100.00 |
| To support the expansion of the program in Western Tidewater to serve 300 girls with a fun, experience-based curriculum that creatively integrates running. | |
| Healthy Suffolk | \$22,500.00 |
| To fund a walking coordinator to increase the registration and sustainability of Walking Groups within businesses, schools and civic/faith-based organizations in Suffolk. | |
| Healthy Suffolk | \$328,596.00 |
| To create a culture of wellness in Suffolk by working as a convener and wellness advocate to implement policy change at the municipal and community levels in Suffolk. | |
| Hope Focus Center | \$75,000.00 |
| To renovate the annex building of the Experience Center into a Sportsplex facility that will provide exercise and recreation for the residents of Franklin. | |
| Hope Focus Center | \$42,500.00 |
| To renovate the interior structure of the facility to provide space for a commercial kitchen that will support healthy living activities for the residents of Franklin. | |
| Isle of Wight Christian Outreach | \$20,000.00 |
| To provide fresh fruit, vegetables and produce to the economically disadvantaged families in Isle of Wight County, Surry County and northern Suffolk. | |
| KaBOOM!, Inc. | \$25,000.00 |
| To support the building of a community playground to encourage Franklin children to enjoy active lifestyles and exercise. | |
| Nursing CAP, Inc. | \$41,750.00 |
| To encourage students to practice healthy lifestyles and to choose a healthcare related career path. | |
| The Children's Center | \$20,000.00 |
| To renovate a covered wooden deck that allows preschoolers to play outside, particularly on rainy days when playground equipment is unusable. | |
| The Planning Council | \$42,665.00 |
| To implement a well-researched model that connects local producers of fresh fruits and vegetables to childcare programs in Western Tidewater. | |
| Virginia Polytechnic Institute and State University | \$75,000.00 |
| To fund the "Cooking Matters" evidenced-based obesity prevention curriculum with in-store shopping, product label reading, tools to stretch food budgets and the hands-on cooking of healthy meals. | |
| Walk In It Inc. | \$25,000.00 |
| To fund an after-school program that encourages healthy self-esteem, healthy decision-making skills and healthy lifestyles by educating for better food choices, regular exercise and the importance of academics and school attendance. | |
| Windsor Athletic Association | \$25,000.00 |
| To install playground equipment for children ages 2-12 adjacent to the Windsor Athletic Association baseball diamonds. | |
| YMCA of South Hampton Roads | \$93,093.00 |
| To proactively address the prevalence of pre-diabetes by implementing a risk-reduction model for Western Tidewater residents based on a national best practice. | |
| YMCA of South Hampton Roads | \$50,000.00 |
| To support center-wide renovations to better serve members through wellness programs, obesity prevention, chronic disease management and exercise. | |
| Total Prevention | \$1,204,473.00 |
| Total Awarded Grants (Round 18, 19 and 20) | \$5,881,730.75 |

Updated 6/19/17

FY 2017 COMMUNITY ENGAGEMENT GRANTS

| | |
|--|--|
| <p>Albemarle Development Corp \$5,000.00 To provide home delivered meals via Meals on Wheels, to older adults (60+) who are currently on a waiting list for home delivered meals in Gates County.</p> <p>ALS Association DC/MD/VA Chapter \$1,000.00 To provide the necessary funding and support for ALS patients in the area with The Walk to Defeat ALS® event.</p> <p>Alzheimer's Association – Southeastern Virginia \$1,000.00 To fund The Walk to End Alzheimer's® event.</p> <p>American Cancer Society..... \$1,000.00 To support the 2016 Suffolk Relay for Life, which promotes local programs and services and celebrates local cancer survivors.</p> <p>American Cancer Society..... \$1,000.00 To support the 2017 Suffolk Relay for Life, which promotes local programs and services and celebrates local cancer survivors.</p> <p>American Diabetes Association \$2,500.00 To support the 2016 Tour de Cure regional cycling event that raises funds and awareness about diabetes and its effects on health.</p> <p>American Red Cross \$3,000.00 To install 200 smoke alarms free of charge in Southampton Meadows Mobile Home Park.</p> <p>Blackwater Baptist Association of Virginia..... \$2,500.00 To gather youth and adult volunteers to pack 20,000 healthy meals for Suffolk, Southampton and Isle of Wight elementary school students' free lunch program and student back pack programs.</p> <p>City of Suffolk..... \$4,993.00 To provide life-saving medical aid to people who have overdosed on heroin or other opioid substances.</p> <p>Coalition Against Poverty in Suffolk, Inc...... \$4,000.00 To produce a promotional video and to purchase computers, phones and office equipment to more effectively serve the increasing number of requests for assistance.</p> <p>Edmarc, Inc. \$1,000.00 To raise awareness of the need for pediatric hospice/palliative care and to help raise the funds needed to deliver this specialized care for children with life-threatening illnesses.</p> <p>Franklin City Department of Social Services..... \$500.00 To provide information about Child Protective Services and child abuse prevention to the community.</p> <p>Friends of the Suffolk Public Library \$2,000.00 To support the “Read for the Win” summer reading program in Suffolk.</p> <p>Graz'n Acres..... \$2,500.00 To provide At Risk students the access to an alternative learning environment that addresses emotional and behavioral mental health issues.</p> <p>Hampton Roads Community Health Center \$2,500.00 To increase access to dental care for those low-income children in Suffolk Public Schools participating in the summer Learning and Enrichment Academic Progress (LEAP) program.</p> <p>Healthy Suffolk..... \$5,000.00 To build program capacity in the Suffolk Community Garden Network by creating an expanded and more sustainable program infrastructure.</p> | <p>HumanKind \$2,500.00 To support costs associated with medical appointments and needs not covered by Medicaid, insurance or other funding sources for residents in HumanKind's Adult Residential Care Program for adults with intellectual disabilities in Zuni.</p> <p>National Kidney Foundation Serving Virginia \$1,000.00 To support the 2016 Hampton Roads Kidney Walk, a community event.</p> <p>Nursing CAP, Inc...... \$1,000.00 To fund the purchase of five computers and educational software applications for use in tutoring in science, math and health-related activities for junior and senior high students.</p> <p>Nursing CAP, Inc...... \$60.00 To encourage capacity building by refunding prior approved training assistance tuition.</p> <p>Peninsula Community Foundation of Virginia \$5,000.00 To support the 24-hour e-philanthropy fundraising event for 2016.</p> <p>Precious G.E.M.S. Inc...... \$1,750.00 To support the 4th Annual Walk for Autism Awareness.</p> <p>Providential Credit Care Management, Inc...... \$2,000.00 To support the Grand Gathering 2: Preventing Health Disparities in Rural Communities of Color event.</p> <p>Relay for Life (Isle of Wight/Surry) \$500.00 To support the Relay for Life team fundraising event to raise funds for the American Cancer Society.</p> <p>RX Partnership..... \$2,000.00 To convene members of rural communities in Western Tidewater with policy, health, civic and faith-based leaders with specific expertise in health disparities among person of color living in rural settings.</p> <p>Smart Beginnings Western Tidewater \$5,000.00 To fund a part-time development coordinator to produce greater financial sustainability and focus on health care access and prevention needs in Western Tidewater.</p> <p>Suffolk Art League.....\$900.00 To provide monthly art therapy workshop for the clients of Western Tidewater Community Service Board's Tidewater House adult daycare program.</p> <p>Suffolk Breast Cancer Society, Inc. \$1,000.00 To display support, courage and hope as 24 cancer survivors are honored and acknowledged as the 2016 Unsung Heroes.</p> <p>Suffolk Education Foundation \$500.00 To eliminate loneliness and foster friendship on school playgrounds, Buddy Benches will be placed at 11 Suffolk public elementary schools.</p> <p>Suffolk Foundation \$5,000.00 To support the 2016 Annual Fall Forum event.</p> <p>Suffolk Redevelopment and Housing Authority..... \$1,000.00 To support the SRHA's 45th Anniversary Celebration.</p> <p>Suffolk Rotary Club \$1,000.00 To support the First Citizen Award Reception that recognizes volunteers and philanthropic leadership and raises funds for Rotary's charitable causes.</p> <p>Susan G. Komen Tidewater \$1,000.00 To support the Susan G. Komen Race for the Cure®.</p> |
|--|--|



MISSION STATEMENT

our mission

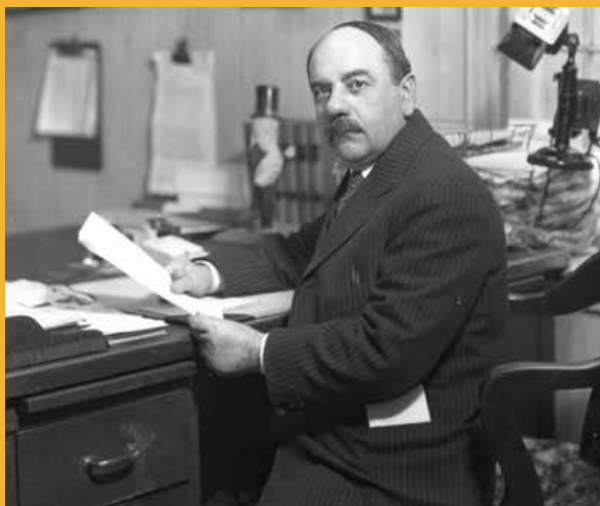
The mission of the Obici Healthcare Foundation is to improve the health status of the people living in the service area by responding to the medical needs of the indigent and uninsured and by supporting programs which have the primary purpose of preventing illness and disease.

our vision

The vision of the Obici Healthcare Foundation is good health and wellness for all.

| | |
|---|--|
| The Doorways, formerly Hospitality House of Richmond, Inc. ... \$1,000.00 To provide family assistance for lodging, meals and other support to Western Tidewater families that must travel to Richmond for medical diagnostics/treatment. | Virginia Faith Based Outreach Initiative \$1,000.00 To promote and educate the public of the causes, risk factors and prevention of diabetes and its relationship to other diseases including heart, dental, eyes, vascular and kidney diseases. |
| The Friends of the Suffolk Public Library \$2,000.00 To encourage the community to stay physically and mentally active over the summer months by promoting reading, exercise and healthy living. | Voices for Kids CASA Program of Southeast Virginia \$1,000.00 To educate the public about program advocacy for abused and neglected children in the 5th Judicial District Court System. |
| The Healing Place of Hampton Roads \$5,000.00 To plan for the creation of residential community resources to fill the gap for those citizens needing addiction recovery services. | Walk In It Inc. \$1,000.00 To support The Walk In It Pink and Black Fundraising Gala. |
| The Links Foundation, Inc. \$2,100.00 To provide an interactive health fair for the Western Tidewater community including areas of Suffolk, Smithfield, Surry, Franklin and Isle of Wight. | Western Tidewater Tennis Association \$5,000.00 To fund an obesity prevention program that promotes and teaches children to get moving by playing tennis. |
| Tidewater Community College Academy for Nonprofit Excellence \$3,000.00 To support the 2017 Academy Forum: Being Donor-Centered in Changing Times, to educate nonprofit professionals, volunteers and funders on donor trends and new technologies. | Windsor Castle Park Foundation \$5,000.00 To fund a Playscape natural playground in Windsor Castle Park to encourage children to play and engage in healthy exercise. |
| | Grand Totals (42 grants) \$94,803.00 |

TRANSFORMING HEALTHCARE



Amedeo Obici, 1877-1947, founder of Planters Peanuts and benefactor of the Obici Healthcare Foundation is seated at his office desk in Suffolk, VA.

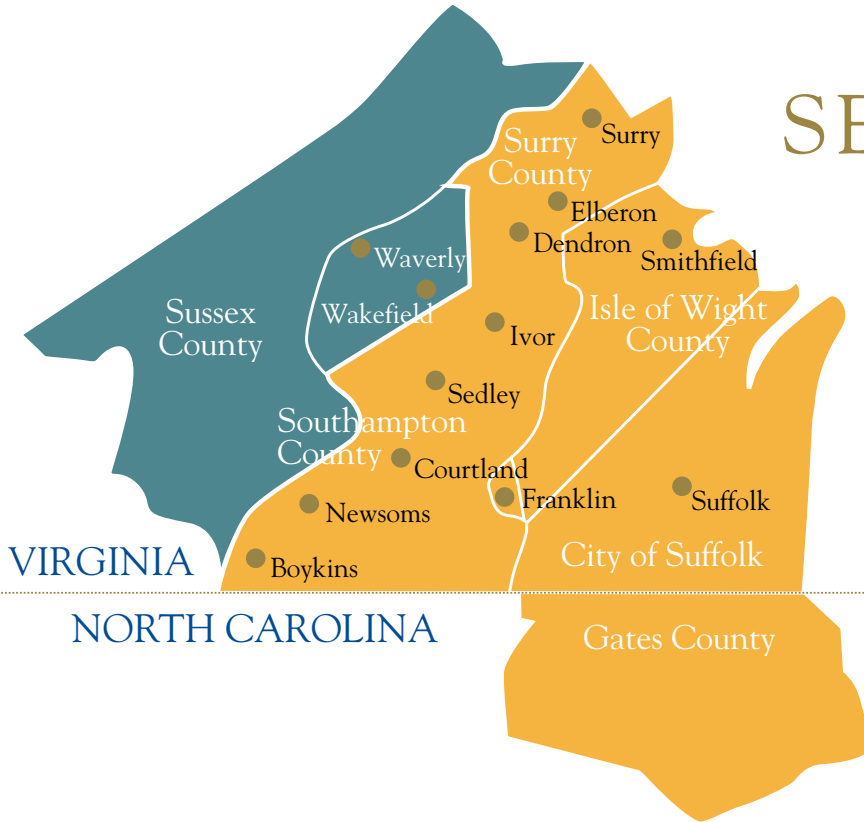
MR. AMEDEO OBICI

To be closer to the large Virginia peanut and its producers, Mr. Amedeo Obici moved Planters Peanuts to Suffolk in 1913. Through his private foundation, which he established in 1924, he dreamed of channeling profits from his business endeavors to safeguard children, strengthen healthcare, bolster education and support spiritual life. His legacy has benefitted many things, including the building of a hospital to memorialize his wife. The Board of Directors takes great care to keep Mr. Obici's mission alive and dedicates its work to Mr. Obici's memory.

SERVICE AREA

municipal populations

| | |
|---|--------|
| Sussex County..... | 2,929 |
| <i>one fourth of Sussex County's population of 11,715</i> | |
| Surry County..... | 6,709 |
| Southampton County | 18,109 |
| Isle of Wight County | 36,314 |
| Franklin..... | 8,490 |
| Suffolk..... | 88,161 |
| Gates County, NC | 11,431 |



FOUNDATION STAFF



Cathy Huband, Grants Administrator; Diane Nelms, Program Officer; Annette Beuchler, President and CEO; Tammie Mullins-Rice, Program Officer; Anna Roberts, Executive Assistant; Mike Brinkley, Director of Finance.

OBICI HEALTHCARE
FOUNDATION

106 W. FINNEY AVENUE, SUFFOLK, VA 23434
PHONE 757.539.8810 | FAX 757.539.8887 | WWW.OBICIHCF.ORG